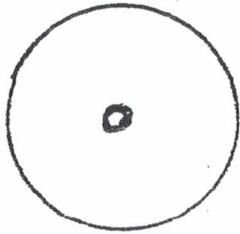


TONE WHEEL GENERATOR BOLTS, Instructions for tightening bolts

Most Hammond tone wheel organs have the main toner generator system suspended by springs inside the organ console. This allows the organ to operate more quietly. However, when moving this type organ, it is important that this tone generator be secured so it will not be damaged. This is easily done by reversing the sleeves on the (4) bolts under the mid section of the organ console.

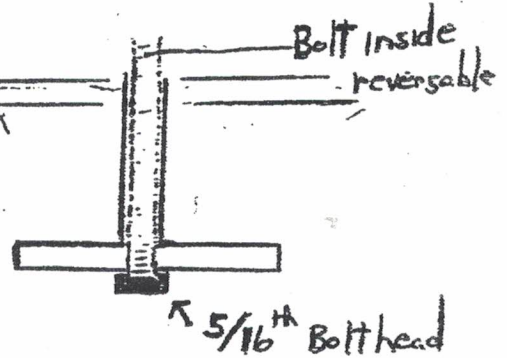
Contact Keyboard Exchange International if bolts are totally missing. We can send you some. If only two are found, place them catty corner.

A-100 series Hammond organs will have two bolts in front of grill cloth and two in the back side of grill cloth.



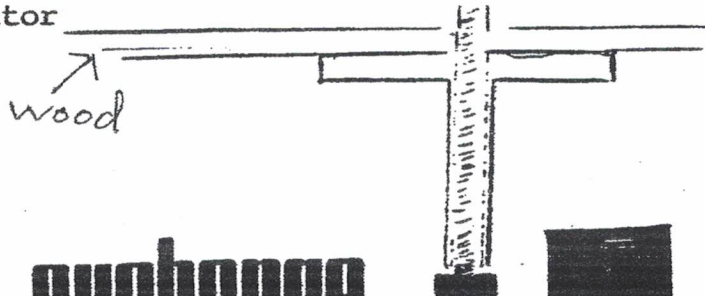
Top View of Sleeve

wood



Not secured only stored

Unscrew bolts and reverse sleeve to look like the below diagram. This will secure the internal generator



keyboard exchange international

SELECT KEYBOARD INSTRUMENTS

Bolts
5/16 head

E-Mail: b3buyer@aol.com